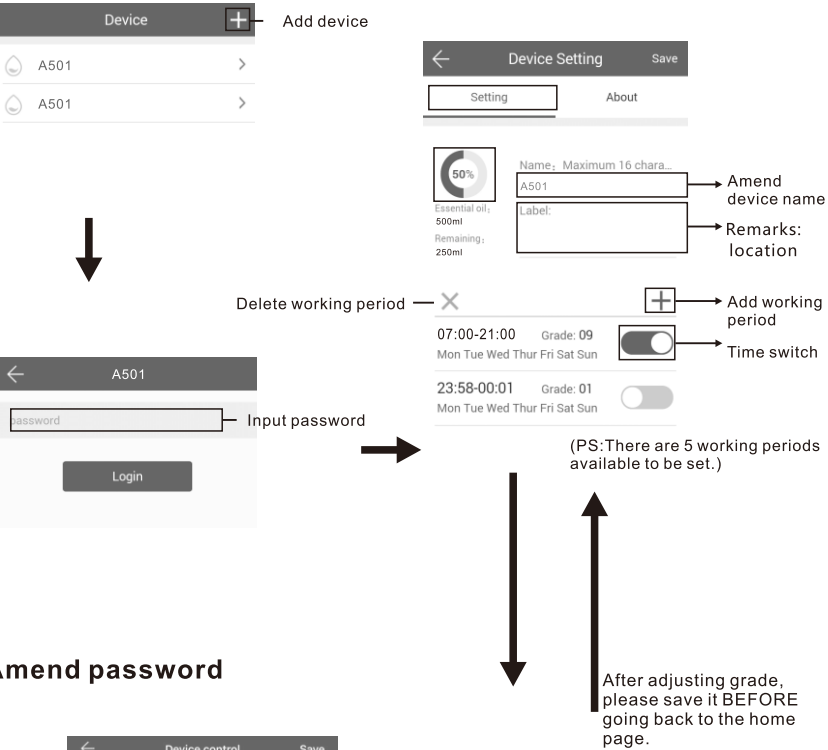
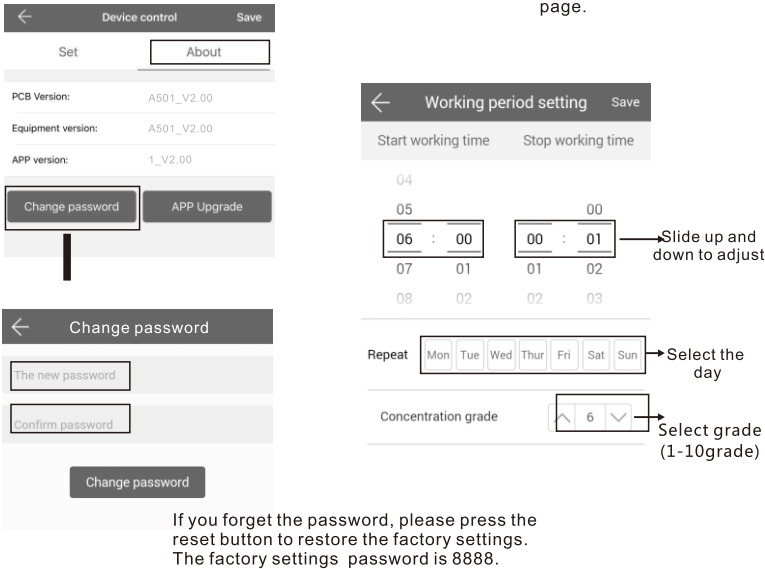


Instructions

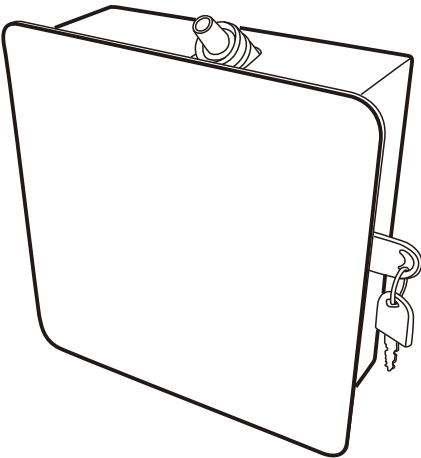
Where to get the app:
Please search "scent marketing" in Google play or App store and you will find it.



Amend password



PRODUCT MANUAL
SCENT MARKETING



Reminding

Bluetooth indicator:
As usual, the bluetooth indicator is powered off. After connecting successfully and it will be flashing for reminder.

Battery indicator:
When it lights for 30s stands for full charged, 5s flashing stands for low power and when it always lights, this machine will stop working.

Concentration and Consumption

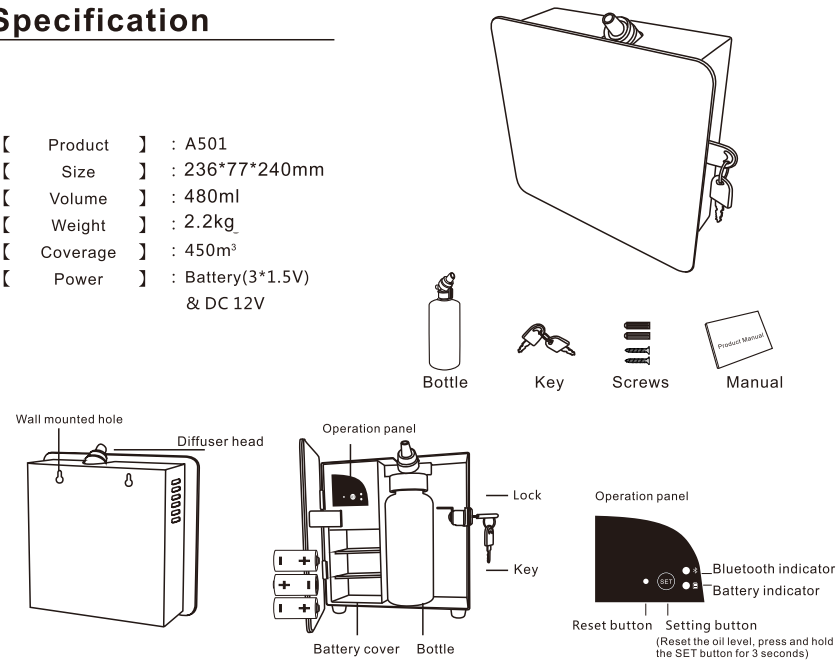
Grade	G1	G2	G3	G4	G5
Intervals (min)	15	13.5	12	10.5	9

Grade	G6	G7	G8	G9	G10
Intervals (min)	7.5	6	4.5	3	1.5

- Notes:
- 1、500ml oils can diffuse 11000-12500 times under normal circumstances.
 - 2、All of the above grade atomization work time is 3 seconds.
 - 3、Different grade and oil may with different consumption.

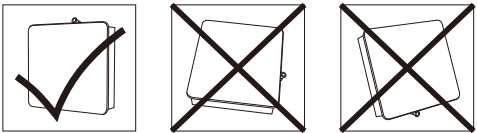
Specification

- [Product] : A501
- [Size] : 236*77*240mm
- [Volume] : 480ml
- [Weight] : 2.2kg
- [Coverage] : 450m³
- [Power] : Battery(3*1.5V)
& DC 12V



Warning

- 1、Please keep the machine vertical. Tilt or lie flatly may cause oil overflow. The machine efficiency may be affected.
- 2、Shall not modify , disassemble or repair the machine . If any failure happens to the machine , please contact our technical personnel .

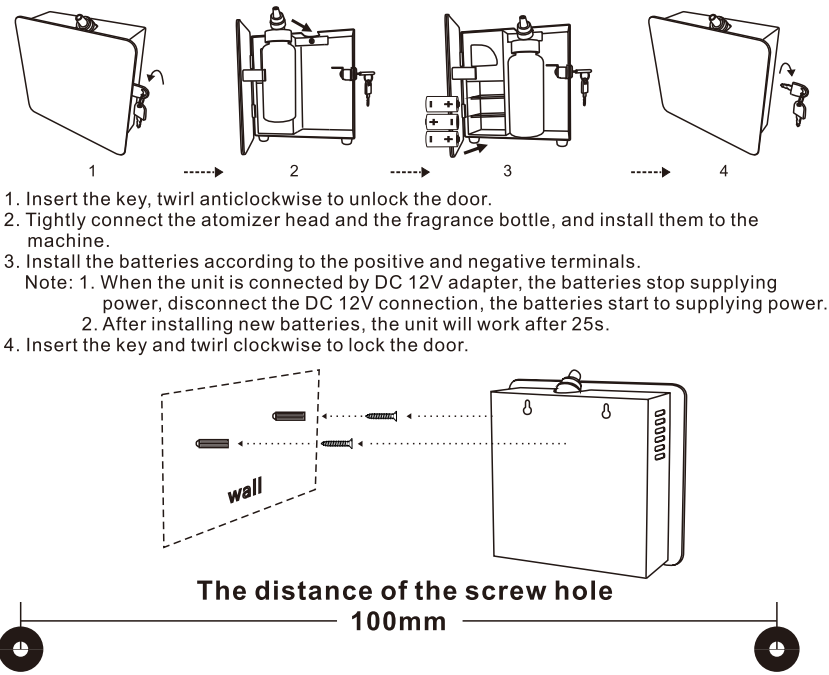


Equipment cleaning

- The machine needs to be cleaned when below situations happen:**
- 1、You're about to change to another kind of essential oil.
 - 2、The atomization volume becomes weak .

- Cleaning steps:**
- 1、Pull out the atomized head, loose the bottle.
 - 2、Find a larger container and fill the industrial alcohol up, then soak the atomized head and the bottle for 5-10mins.
 - 3、Airing the atomized head and the bottle.
- Note:**
1. After cleaning the device, turn on the unit, press and hold SET button for 3 seconds to reset remaining oil level.
 2. After spraying 3 seconds, the unit will stop 2 seconds, then it will spray 50 milliseconds for clearing the remaining oil in the atomizer head, it is normal.

Installation



Troubleshooting

Before asking to have the machine repaired, please try to diagnose the problem first following to bellow instructions.

Symptom	Remedy
Does not diffuse	<ul style="list-style-type: none">- Check whether the batteries are loose or in low battery situation.- If the machine is in "not working period", it stops diffuse.- Check whether the air pump is normal or not.- Check whether the gasket is damaged/loose or not.
Spray little	<ul style="list-style-type: none">- Check whether the gasket is damaged.- Check whether the atomized core is plugged or not.- Check whether the cap of the atomized head is loose or.
Oil spill	<ul style="list-style-type: none">- Whether the atomized head is damaged or not.
Abnormal sound	<ul style="list-style-type: none">- Pump is loose, install it correctly.- The pump is damaged, change a new one.